



Downsview Newsletter

5TH SEPT
2025

**WELCOME
BACK TO SCHOOL**

<https://www.downsview.croydon.sch.uk/>

*Our value this
half term
Cooperation*

A warm welcome to all our new families joining us this year, especially our new Nursery and Reception children, as well as those who have joined us across other year groups. We are delighted to have you as part of the Downsview family and look forward to supporting your child's learning and development.

At Downsview, our school is built on six core values – Love, Cooperation, Diversity, Resilience, Responsibility and Trust – all centred around our one golden rule: Respect. These values guide everything we do and help create a safe, happy, and respectful learning environment where every one is encouraged to do their best.

We are excited to see these values in action throughout the year and to celebrate the many achievements of our children as they grow both academically and personally.

We believe that the partnership between school, parents and children is key to success. We look forward to working closely with you all as a strong tripartite team to support your child's journey and ensure they have a positive and enriching experience at Downsview.

Thank you for being part of our community. Here's to a fantastic year ahead!

This week, our children explored the idea that superpowers aren't just about superheroes or flying—they come in many forms. Through examples like powerful machines, nature's forces and even healthy food, we broadened their understanding of power.

The heart of the assembly was a story where the characters were discovering their own unique superpowers—qualities like kindness, cooperation, resilience and leadership. We encouraged the children to reflect on which superpower they want to use this year, whether at school, home, or with friends.

Our key messages:

- Everyone has a superpower inside them.
- Cooperation and respect help us use our powers well.
- Leadership means helping others and working together.
- You don't need a cape to be a hero—your actions make you one.

We are proud to nurture these values in our children as they grow into confident, caring leaders.

Walking Home

Children in Years 5 and 6 may walk home alone only with written permission from a parent/carer. Younger siblings are not allowed to walk home with older brothers or sisters unless they are also in **Key Stage 2** and permission has been given. If you would like your child(ren) to walk home alone, please complete the consent form via the link in this email.

https://docs.google.com/forms/d/1RmhGnOMZ91rTdEKSyDu6_RuH1DFrN8Un1bn0LRNrw3Q/e
dit

Your child(ren) will not be allowed to leave the school premises without an adult, until we have received written consent.

A new year with new priorities...

We are delighted to welcome you and your children back to Downsview Primary and Nursery School for another exciting and inspiring year ahead. As always, our foundation remains our one golden rule of Respect, which underpins a positive and harmonious school community. Alongside this, we continue to uphold our six core values: Trust, Love, Diversity, Resilience, Responsibility, and Cooperation. These values guide us in all aspects of school life, nurturing confident, compassionate, and well-rounded children who are equipped to succeed both inside and outside the classroom.

Our Key Priorities for 2025-2026

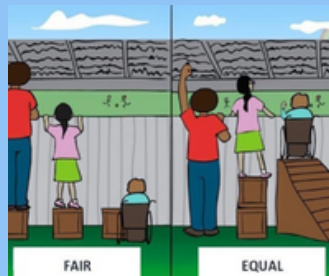
Raising Standards with a Spotlight on STEM-

- We are committed to increasing engagement and achievement in STEM subjects, especially for girls, by challenging gender stereotypes and providing targeted support
- Our STEM curriculum will deepen children's reasoning, application, and challenge to enhance learning experiences.
- We will also strengthen parent and community engagement in STEM to support aspiration and enrichment.
- Literacy skills will be rigorously supported within STEM lessons to ensure no child is held back.



Inclusion for All – Accelerated Progress & Meeting Individual Needs

- We will ensure a consistent, inclusive approach to support children new to English (EAL), accelerating language acquisition and integration.
- Adaptive teaching practises and the effective deployment of Learning Support Assistants will complement quality first teaching to ensure measurable progress for all children, including those with SEND and those eligible for pupil premium.
- Robust assessment and reflective practises, including 'Building Learning Powers' and Kagan cooperative learning strategies, will be embedded to close gaps and accelerate progress across all year groups.



Everyone's a Leader – Distributed Leadership

- We will embed distributed leadership through coaching to strengthen teacher standards and accountability.
- A sustainable coaching and mentoring programme will support Early Career Teachers and new leaders.
- We will deepen children's leadership opportunities to support their SMSC development and link with STEM aspirations.



SMSC – Developing the Whole Person

- A coherent SMSC thread will run throughout the curriculum and school life, developing children as responsible, interested, and interesting future citizens.
- We will strengthen community links and leadership opportunities to develop confident young leaders.
- Online safety and contemporary social issues will be integrated into the curriculum and activities.
- Staff wellbeing will be promoted through a culture of support, value and shared responsibility aligned with our school values and ethos.



Upcoming Parent Meetings

Next week, we look forward to welcoming you to our annual parent meetings. This is a valuable opportunity to meet your child's teacher, learn about the exciting opportunities planned, understand our school expectations and ask any questions you may have.

If you are unable to attend, the presentation will be shared on Class Dojo.

We are excited about the year ahead and look forward to working together in partnership to provide the best possible education and support for your children.

Thank you for your continued support.



Strategic Way Forward Change in the Leadership Structure Sept 2025



We want to inform you about a recent restructuring of our leadership team at Downsvie.

This change involves transitioning from the Heads of Year (HOY) role to a new model of Strategic Development Leads (SDL).

While this restructuring aims to enhance our strategic direction and leadership effectiveness, we want to reassure you that it will not directly impact your experience at the school.

If you have any concerns you should always speak directly to your class teacher either at the end of the day or through a message on ClassDojo. Should you feel that your concerns have not been addressed after speaking with the class teacher, please email:

teachingandlearning@downsvie.croydon.sch.uk to arrange a meeting with a member of the leadership or senior leadership team.

In your email, kindly outline your ongoing concerns so we can ensure the appropriate member of the team contacts you to resolve the issue.

Thank you for your continued support as we strive to provide the best possible education for our children.

Please remember for more information, we do have a [Concerns and Complaints Policy on our website](#)

GDPR / Data Protection at Downsvie

At Downsvie, GDPR (General Data Protection Regulation) is taken very seriously to ensure that all personal information about our pupils, staff, and parents is handled securely and with respect.

We collect important data such as contact details, medical information, and academic records, and it is essential that this information is protected from misuse or unauthorised access. By following GDPR guidelines,

Downsvie maintains the trust of our school community, ensuring that personal data is only used for legitimate purposes and shared appropriately.

We also respect the rights of individuals to access, correct, or request the deletion of their information. Upholding GDPR helps us create a safe and secure environment for everyone and ensures we meet legal requirements around data protection.

Please [click on link](#) to view our policy on our website: [GDPR & Data Protection Policies](#)

REMINDER

**SAFETY
FIRST**

Playground

We kindly ask that the playground is cleared by 3:30pm, and by 3:45pm on Fridays. This is to ensure that our clubs and extended schools can safely use the grounds, and that only authorised individuals remain on site.

We also request that **NO** football games take place anywhere on the playground. Due to the high number of children and adults moving around at these times, it becomes unsafe to have a ball in play. Additionally, our staff are unable to supervise these games, and should an incident occur, we may not be able to address it due to other responsibilities and workloads. Please remember to walk your bikes and scooters off the property to ensure every safety.

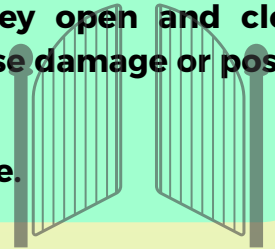
Thank you for your cooperation in helping us keep the school grounds safe for everyone.



School Electric Gates around the School

School gates are an important part of keeping our pupils safe, as they help us manage access to the site and maintain a secure environment for everyone. We kindly ask all parents and visitors not to push, pull, or swing on the gates. They open and close automatically at a safe and controlled speed and forcing them can cause damage or pose a risk to others.

Thank you for your support in helping us keep our school safe and secure.



Parking and driving before and after school

As part of our commitment to keeping Downsview a safe and welcoming place, we kindly ask all families to be respectful and cautious when driving and parking near the school.

Please remember to:

- Drive slowly and carefully, especially around the roundabout and near the church.
- Park legally and safely, never blocking neighbours' driveways.
- Be respectful of our neighbours and avoid causing congestion.
- Consider parking further away from the school and walking the rest of the way to reduce traffic and ensure children's safety.
- Speak politely to one another and model good behaviour for our children.
- Help ensure children arrive calm and ready for learning.

Together, we can maintain a safe environment for everyone in our community.



Medication in School



Please be aware that we can only administer medication that has been prescribed by a doctor. If your child needs medication during the school day, including an asthma inhaler, please bring it to the school office and complete the relevant consent form. It is very important that any medication is collected promptly once the course is finished, so we can keep the school environment safe and ensure no medicines are left on site unnecessarily.

School Procedures

The beginning of the school day:

- Children are not allowed on site before 8.45am, unless they are attending a club, musical practice or special school event, as there is no adult supervision. The doors open at 08.45 am. and children will make their way to their classroom.
- The register closes at 09.05 am. All children who arrive after this time are late and must report to the school office to sign in via our electronic InVentry System.

Absence Reporting

- Parents/Carers must contact the school office, using the attendance@downsview.croydon.sch.uk mailbox no later than 9.00am reporting their child's absence.

The office follows "first day calling" procedures contacting parents/carers who have failed to inform the office of any absence. A text will be sent and if we haven't had a response by 11.00 am a follow up phone call will be made, to parents and then to emergency contacts if necessary.

Parent-School Communication

It's important that we have up-to-date information for all our pupils to ensure their safety and wellbeing. This includes contact details, medical information, and any allergies your child may have.

If there are any changes, please contact the school office as soon as possible so we can update our records accordingly.

At Downsview, our primary method of communication is through ClassDojo.



ClassDojo

We expect all parents to have access to and engage with this platform, as it allows for timely and efficient communication between teachers and families.

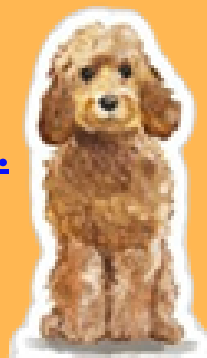
ClassDojo is particularly beneficial as it is user-friendly for both teachers and parents, including those who may require messages to be translated. If you do not have access to ClassDojo, please speak with either your class teacher or the school office who will send you an invitation to join.

Please [click here](#) to view the 'Guide to School Communication' flyer.

DATES FOR THE DIARY...



[LINK TO WEBSITE CALENDAR...](#)



Mon 8th: 3:30-4:30 Y3 Meet the team parent meeting in hall
Tues 9th: 3:30-4:30 Year 2 Meet the team parent meeting in hall
Wed 10th: 3:30-4:30 Year 4 Meet the team parent meeting in hall
Thurs 11th: 3:30-4:30 - Year 5 & 6 Meet the team parent meeting in hall

Mon 15th: Clubs start
Tues 16th: Junior Governor election
Fri 19th: Whole school BBQ

Wed 24th: Y6 Imperial War Museum
Fri 26th: Y5 EI workshop with parents AM KS2 Hall
Mon 29th: At the beginning of the day, Reception children come up on their own

Sustainable Calendar 2025
In **SEPTEMBER** I will promote a sustainable behavior at school.



Sustainability Calendar
LINK



Learning Support Assistant



Why Downsview? Join a supportive team dedicated to providing the best learning environment for our children. If you're ready to make a difference, visit our website at:

www.downsview.croydon.sch.uk for the full advert and job description.



1st Sept - 24th Oct 2025

Half-term:

27th Oct - 31st Oct

3rd Nov to 19th Dec 2025

Inset days: 1st & 2nd Sept 2025

Term Dates



5th Jan - 27th March 2026

Half Term: 16th- 20th Feb

Easter holidays: 30th

March - 10th Apr 2026

Inset days: 5th Jan 2026



13th Apr - 22nd May 2026

Half Term: 25th- 29th May

1st June - 20th July 2026

Inset days: 20th July 2026

Bank Holiday:

4th May 2026



OUR UNIFORM

The nearest local supplier is Bubblegum School Wear, 113 High Street, Thornton Heath, Surrey, CR7 8RZ.
Telephone: 020 8683 2773

We are proud of our school uniform, which makes the children look smart and fosters a sense of belonging to the Downsview family. All children are expected to wear school uniform, with adaptations for children attending the Nursery. The cost of this is kept as low as possible by not specifying a particular design from one retailer.

Reception, Key Stage 1 (Years 1 & 2) and Key Stage 2 (Years 3, 4, 5 & 6)

The standard uniform is based on the colours burgundy and grey and comprises the following items:

- Grey trousers, shorts, or skirt/pinafore
- White shirt or white polo shirt
- Burgundy school jumper or sweatshirt (with or without school logo) or cardigan
- Hijabs, if worn, should be in plain black or burgundy
- Summer dress in pink and white or red and white gingham
- Black closed shoes with flat heels or dark trainers (black, navy, or dark grey) only (no open-toed sandals). Shoes or trainers should be suitable for school wear for safety reasons.
- There is also an optional school fleece and sweatshirt available only from Bubblegum.

Nursery- not required to wear the formal school uniform

Children should wear the school navy tracksuit bottoms with a white polo shirt or house coloured t-shirt. They can either wear the Downsview navy tracksuit jacket or burgundy school jumper/cardigan. They must wear trainers or shoes which are suitable for outdoor play. They will require at least one house coloured t-shirt to wear at sporting events, such as the school Sports Day.

PE Kit – Nursery to Year 6

Games and PE (including swimming when appropriate) are compulsory subjects and children are required to wear the correct kit, comprising:

- Red, Blue, Yellow or Green House T-shirt (with or without school logo)
- Downsview navy blue tracksuit bottoms and jacket – they can either wear the Downsview navy tracksuit jacket or a burgundy school jumper/cardigan (with or without school logo)
- Black shorts or plain black leggings (under tracksuit if appropriate)
- Black trainers or plimsolls (please note that gymnastics is done barefoot)

Every pupil at Downsview belongs to one of the following school houses: Red, Blue, Yellow or Green and parents will be informed of their child's house colour once admitted to the school. House coloured T-shirts with a school logo are optional and available from Bubblegum.

Summary of Uniform Requirements:

Compulsory Branded Items: Downsview navy blue tracksuit (bottoms only – *jacket optional*).

Optional Branded Items: PE House coloured t-shirts, school jumper/cardigan, school fleece, school sweatshirt, Downsview book bag or satchel (if opting for non-branded, must be burgundy).

Non-Branded Options: Burgundy school jumper or cardigan, burgundy sweatshirt and house coloured T-shirts which can be sourced from other retailers.

All items should be clearly marked with your child's name. We cannot use valuable time searching for un-named articles. Property, including money, is not insured by the Local Authority. In their own interests, parents are advised to obtain insurance cover against loss of or damage to their property while on school premises or elsewhere.

COMPULSORY BRANDED ITEMS



PE TRACKSUIT BOTTOMS

Compulsory branded items and optional branded items can be purchased from our uniform supplier Bubblegum Schoolwear, 113 High St, Thornton Heath, CR7 8RZ. The school often hold second hand uniform sales once a term where all items listed can be purchased at a reduced price.

OPTIONAL BRANDED ITEMS



SWEATSHIRT



JUMPER



CARDIGAN



FLEECE



PE T-SHIRT



PE TRACKSUIT JACKET



SATCHEL



BOOK BAG

NON-BRANDED OPTIONS



SWEATSHIRT



JUMPER



CARDIGAN



FLEECE



PE T-SHIRT



SATCHEL



BOOK BAG



FREE SCHOOL MEALS



Your child may be eligible to receive Supermarket Vouchers during the school holidays! Details of how to apply can be found below.

For those children who are eligible for benefits related free meals, schools are able to claim extra funding through the Pupil Premium. If your child is eligible, the school can use the extra funding to improve the quality of provision, for example, buying additional resources and equipment to support teaching & learning. In addition, if your child is eligible, you will receive an electronic voucher which can be used at a range of shops including Sainsbury's Tesco, ASDA, Morrisons, Lidl & Iceland during the school holidays!

We want to ensure that all our eligible families take up this offer!

TO FIND OUT IF YOU ARE ELIGIBLE TO RECEIVE FREE SCHOOL MEALS AND SUPERMARKET VOUCHERS, PLEASE REVIEW THE ELIGIBILITY CRITERIA BELOW:

Benefit Related Free School Meals

Children whose parents receive the following may be entitled to free school meals:

- Income Support
- Universal Credit if you apply on or after 1st April 2018 your household earned income must be less than £7,400 a year (after tax and not including any benefits you get)
- Income-based jobseeker's allowance
- Support under part VI of the immigration and Asylum Act 1999
- Child tax credit, and have an income that does not exceed £16,190 as assessed by HMRC. If you receive working tax credit as well as child tax credit you will not be entitled to free school meals.
- The guarantee element of state pension credit

OR if you are not in receipt of any of the benefits listed above, you may be able to apply under:

No Recourse to Public Funds (NRPF)

Eligible groups include, but may not be limited to children of:

- Zambrano carers
- Families who have NRPF with a right to remain in the UK on grounds of private and family life under Article 8 of the European Convention of Human Rights
- Families receiving support under Section 17 of the Children Act 1989 who are also subject to a no recourse to public funds restriction
- A subset of failed asylum seekers supported under Section 4 of the Immigration and Asylum Act 1999
- Chen carers
- Families holding a BN(O) passport
- Spousal visa holders
- Work visa holders & student visa holders
- Those with no immigration status

Income thresholds

Under the permanent extension of free school meal eligibility to those with NRPF, the annual household income threshold for those families able to work are:

- £31,200 for families within London with 1 child
- £34,800 for families within London with 2 or more children

If you believe you are eligible, please come to the school office to collect an application form so that we can confirm eligibility on your behalf.

Please note: Families whose children have previously applied and receive free school meals do not need to re-apply.

Snack Time



At Downsview, we take great care in promoting healthy eating to support our pupils' wellbeing and learning. As a nut-free school, no nut-based products - including spreads should be brought in due to severe allergies.

Children in EYFS and KS1 are provided with a free piece of fruit at break time, while KS2 pupils should bring a healthy snack such as fresh fruit or vegetables, natural yoghurt, cheese, or a low-sugar cereal bar.

Fizzy drinks, fruit juices, sweets, and chocolate are not permitted at any time, only water—or subsidised milk for EYFS pupils—is allowed.

Packed lunches should include fruit or vegetables and avoid sugary snacks and drinks, with uneaten items returned home for parents to monitor.

Lunch staff help oversee food choices, and we will reach out if healthier alternatives are needed.

For full details, please see our School Website for our School Food Policy:

[Downsview Whole School Food Policy](https://downsview.croydon.sch.uk) (downsview.croydon.sch.uk)

Stay healthy



Smartphone Free ZONE



Last year we received unwavering support from all the families in Years 5 and 6, who respected and embraced our decision to become a smartphone-free school.

From September 2024, Downsview became a smartphone-free school. This means that children in Years 5 and 6, who are permitted to bring phones to school, are no longer allowed to bring in smartphones. They may bring a basic 'brick' phone solely for safety purposes, such as calling or texting you when travelling to and from school.

It's worth noting that secondary schools are also increasingly banning smartphones, so investing in one for secondary school may not be necessary. This shift is part of a broader national trend aimed at addressing the impact of smartphones on children's mental health.

There is a national conversation about the appropriate age for children to receive their first smartphone. While technology offers numerous benefits and opportunities, recent research has highlighted a concerning link between the age at which a child gets their first smartphone and mental health issues in young adulthood. (see research <https://sapienlabs.org/wp-content/uploads/2023/05/Sapien-Labs-Age-of-First-Smartphone-and-Mental-Wellbeing-Outcomes.pdf>)

We encourage parents who feel the need for their child to have a phone for safety reasons to consider pay-as-you-go basic phones without internet access. These phones are both affordable and readily available. Please note, pupils will still be required to hand in their phones at the beginning of each school day. Here is a link for brick phone alternatives- <https://smartphonefreechildhood.co.uk/alternatives>

In the meantime, the Downsview SFC parents' group have offered to be on hand to support, signpost information and talk through the transition. Here is the link to their WhatsApp group <https://chat.whatsapp.com/lwCWZ8U6lqKHqVOKme2i4I>

Please also take the time to sit down with your children and watch the video below from Smartphone Free Childhood which explains:

- How smartphones changed the world
- How they're designed to grab your attention
- The hidden superpowers you unlock by waiting to get a smartphone
- Views from teens on why smartphones aren't all they're cracked up to be!

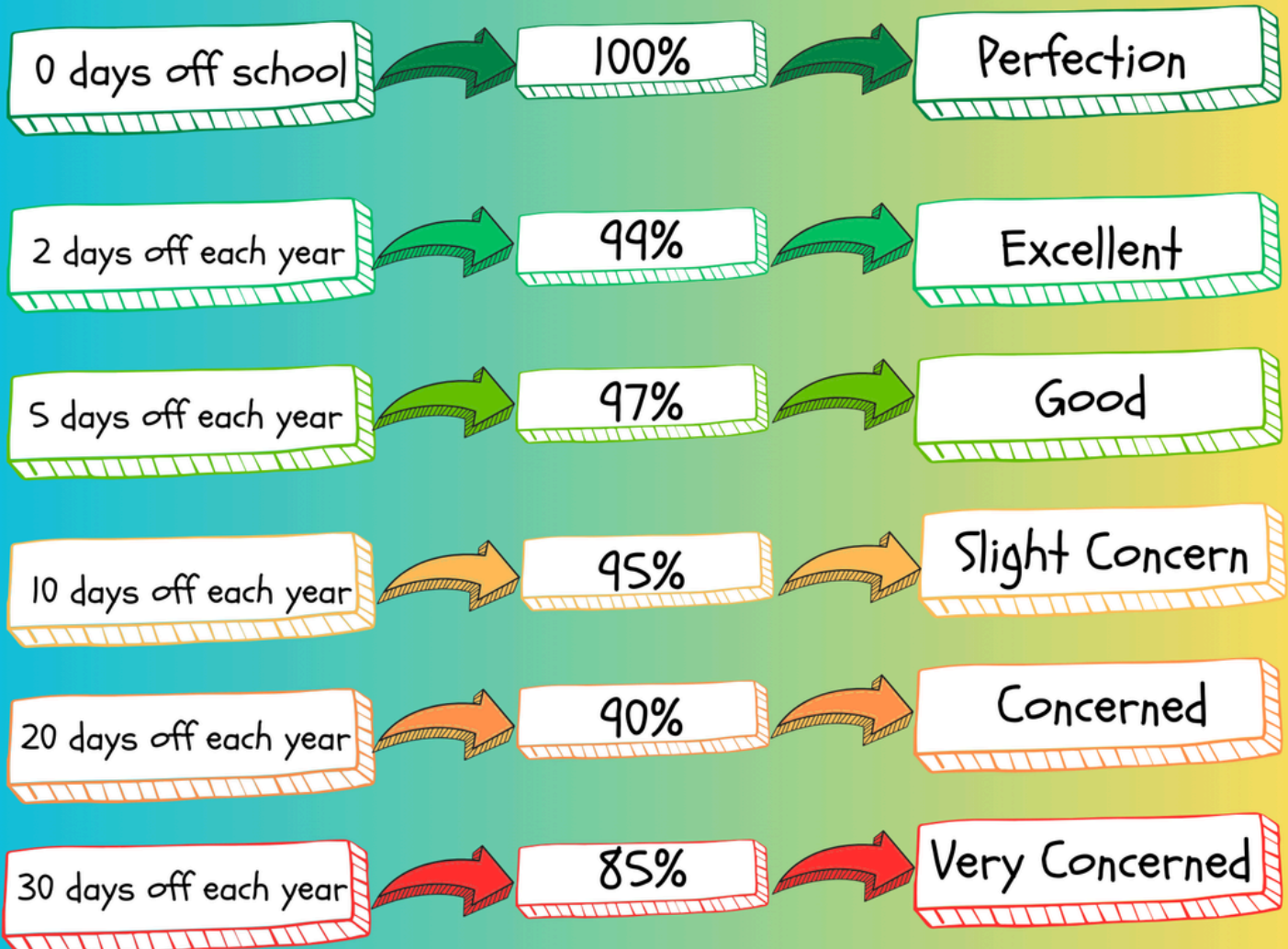
[This made my kids stop begging for a phone](#)

For more detailed information and resources, please visit the Smartphone Free Childhood website. [Smartphone Free Childhood](#)

We appreciate your understanding and cooperation in this matter.

THANK
YOU!

EVERY SCHOOL DAY COUNTS



Every Minute Counts

LATENESS = LOSS LEARNING

(Figures below are calculated over a school year)

5 Minutes late each day	3 days lost!
10 Minutes late each day	6.5 days lost!
15 Minutes late each day	10 days lost!
20 Minutes late each day	13 days lost!
30 Minutes late each day	19 days lost!

DOWNSVIEW PRIMARY & NURSERY SCHOOL

ARE YOU LOOKING FOR A RECEPTION PLACE 2026?

02087644611 or sec1@downsview.croydon.sch.uk

- ✓ Do you want to be part of a community school who cares about the whole child?
- ✓ Are you as passionate about sustainability as we are?
- ✓ Are you looking for a school that has fantastic facilities and massive grounds with green spaces and wooded areas to explore? We have an exceptional Forest School where all teachers have Level 3 Forest School's accreditation.
- ✓ Do you want to be part of a school who celebrates diversity and inclusion?



We even have
our own School
Dog- Joey!



Here is what some of our Nursery and Reception parents have said:

"I highly recommend Downsview . The structure and their ethos is amazing. The children have a wide variety of learning resources which are always fun for them. The staff are amazing with the children and the school has so much to offer."

"We are incredibly pleased that we chose Downsview for our child. She has settled well, loves her teachers and has made a lovely group of friends. She is thriving at Downsview, and is boosted by the encouragement that is given to all children - effort is rewarded daily, and the children are taught to celebrate their own successes as well as those of their friends, however big or small. The enthusiasm, friendliness and kindness of the teachers are seen across the school from the Headteacher through to the Support team. The grounds and facilities are also fantastic - a huge grass playing field and playground, set back from the road - not seen within many London schools! I can't recommend Downsview enough." [Click here for more...](#)

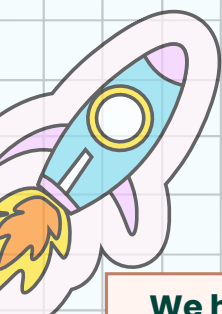
WEDNESDAY 5TH NOVEMBER 2025 AT 9.00AM -10.30 AM

TUESDAY 11TH NOVEMBER 2025 AT 9.00AM - 10.30 AM

WEDNESDAY 19TH NOVEMBER 2025 AT 9.00AM - 10.30 AM

TUESDAY 2ND DECEMBER 2025 AT 9.00AM - 10.30 AM

Welcome Back to school!



We hope you had a wonderful summer, whether away, adventuring locally, or simply relaxing. It's lovely to see the school buzzing again with children, families, and staff.

Friends of Downsview are refreshed and ready for another year of community, connection, and fundraising. We've got a fantastic line-up of events—fun favourites and exciting new ideas—and every bit of support, from volunteering to attending, helps us make a real difference.

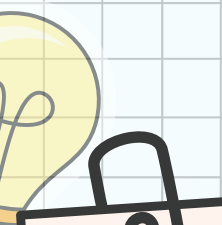
Here's to a great year ahead! ♥

A WARM WELCOME TO OUR NEW RECEPTION FAMILIES!

Starting school is a big milestone, and we're so happy to have you join the Downsview community. We hope your little ones are settling in and that you enjoyed the small welcome gift from Friends of Downsview (PTA).

We'd love to meet you at our first **Coffee Morning** on **Friday 26th September**—a chance to connect with other parents, chat with the PTA, and hear about our events. Whether you'd like to get involved or just stop by for a cuppa, you're very welcome.

We look forward to seeing you soon!



LAST YEAR WE RAISED

£24,364

★

PLAYTIME GETS AN UPGRADE THIS SEPTEMBER!

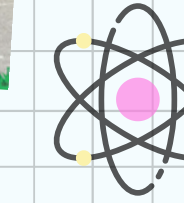
- KS1 playground - play train (pic attached)
- KS1 playground - Jump&tag post
- KS2 outdoor gym - artificial grass surface on the ground
- KS2 field area - Jump&tag post

Total cost: £17,258!



We have spent £5,300 and our big projects are coming in SEP!

Y6 LEAVERS HOODIES £431	Y6 PARTY DISCO £188	PHONE TALK EVENT £150	VENDING MACHINE BOOKS £357
FOD FLAG £190	SPORTS DAY INFLATABLES £732	Y6 INFLATABLES £244	
PANTO £300	WHEELY BIN £94	PE KITS £375	FOREST SCHOOL EQUIPMENTS £2,239



& WE ARE BACK

EVERY FRIDAY FROM 5TH SEPTEMBER @3:15 PM
at the adventure play ground

FROZEN FRIDAY



- ICE LOLLY £1.00
- ICE CREAM £1.50
- VEGAN/HALAL THE SWEETBAG (100G) £1.00

Miniml ECO Refill Shop:

- Washing up liquid 100ml £0.40
- Hand wash 100ml £0.55
- Body Wash 100ml £0.55
- Shampoo 100ml £0.70
- Conditioner 100ml £0.70

Bring your own bottle, or get one from us!

CASH and CARD payments are now both accepted

Reminders

UNIFORM SALE AND DONATION

HELP US TO REUSE UNIFORMS AND SAVE THE ENVIRONMENT!

Please donate any clean, undamaged uniform in the red bin outside the office at the recycling point.

COFFEE MORNING!

26TH SEP. FRIDAY
9-10AM

in the Lake room.
With tea, coffee and treats.

Meeting point at the school office area at 9am.

We're now accepting ALL donations again (toys and books)! Please make sure they're either new or in great condition with all parts included. Thank you for your support!

Raise FREE funds for

Downsview Primary

with easyfundraising

<https://www.easyfundraising.org.uk/support-a-good-cause/step-1/?char=112803&invtr=63jv6&referral-campaign=2s>

CRAFTS AT DOWNSVIEW CHURCH

All children up to 12 years are welcome to attend our free session with a responsible adult.

9TH SEPTEMBER
3:30-5:00PM

THEME: WATER

8,000+ retailers will donate to us whenever you shop with them

Argos TESCO JOHN LEWIS ebay JUST EAT

Start at the easyfundraising website or app

Click out to where you'd like to shop

Checkout: prices are exactly the same!

The retailer sends a % of your spend to easyfundraising

They pass it on to us :)

Plus, you'll get...

Exclusive retailer offers Competitions A warm feeling inside!

Sign up to support us before July 31st and we could win a £500 donation. Plus, you'll also get an entry to win a £100 Amazon voucher for yourself!

Join us from July