

# THANK YOU



We would like to extend our heartfelt thanks to Mr Phil Eracleous, who is stepping down as Chair of Governors after over four years of dedicated service. Phil has been a tremendous support to all stakeholders of the school. With the children always at the heart of his decisions, he has championed staff well-being, including supporting the Senior Leadership Team and has been a positive and strong voice for parents.

Phil consistently went above and beyond to support the school community. He has led the governing body with respect and integrity, ensuring that governors challenge the school constructively and thoughtfully. He has truly exemplified what an outstanding Chair of Governors should be.

While we will greatly miss Phil's presence on the board, we are pleased to know he will continue to be involved as a parent within our community. Thank you, Phil, for all you have done for Downsview over the past four years.

We are now pleased to welcome Mr Andy Walters as our new Chair of Governors. Having had such a great role model in Phil, we are confident that Andy will help lead the school from strength to strength.



## WINTER PERFORMANCE

We are delighted to welcome you to our Winter Nativity performances! To ensure a smooth and respectful show for all our children, please take note of the following details:

Performance Times:

- Morning performance starts at 9:30am (doors open at 9:15am)
- Afternoon performance starts at 1:45pm (doors open at 1:30pm)

Entry:

- Please enter the building via the back of the big hall, not through the school office.

Seating:

- If you are bringing younger siblings, kindly sit at the back of the hall so you can exit quietly if needed. Pushchairs are to be left outside the back entrance for health and safety reasons.

Photography and Filming:

- You are welcome to take pictures and videos of your own children. However, please do not share these on social media and be mindful of others behind you when holding up devices. Let's try to be in the moment.

During the Afternoon Performance:

- After the show, children will return to their classrooms and be dismissed from the playground as usual. Please ensure your phones are on silent to maintain a calm environment.

**A Special Note for Nursery Parents:**

We understand that Nursery children perform first. If you need to leave after their performance, we will kindly allow a minute for you to exit. Please make sure you sit in a seat (or stand) that will allow you to exit without issue. Thank you for your understanding and support in helping us create a wonderful experience for all the children.



We look forward to seeing you and sharing this special time together.

# DATES FOR THE DIARY...

## LINK TO WEBSITE CALENDAR...

### DECEMBER

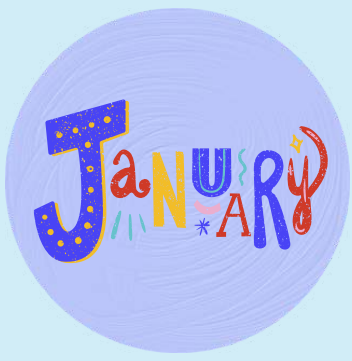
#### Sustainability Calendar LINK




Tues 9<sup>th</sup> **EYFS/KS1** Winter performance 9.30-10.45am & 1.45-2.45pm  
Weds 10<sup>th</sup> **KS2** Winter performance 9.30-10.45am & 1.45-2.45pm  
Mon 15<sup>th</sup> **FOD** Christmas Movie night 3.30-5.00pm  
**FOD** Christmas Shop  
Tues 16<sup>th</sup> **FOD** Santa Run  
Weds 17<sup>th</sup> **FOD** Christmas Shop  
Thurs 18<sup>th</sup> Pantomime Day  
Class Christmas Parties  
Fri 19<sup>th</sup> School breaks up at 1.15pm for **ALL** children



December



Mon 5<sup>th</sup> **INSET for Pupils**  
Mon 12<sup>th</sup> **Clubs Start**  
Tues 13<sup>th</sup> **Year 4** Come Dine with Me!  
Thurs 15<sup>th</sup> **Reception Height & Weight checks**  
Fri 16<sup>th</sup> **FOD** Mufti Day - Rainbow Hamper  
Mon 19<sup>th</sup> Young Voices Choir event  
Thurs 22<sup>nd</sup> **SEND** Coffee Morning - 9.15 - 11.00am  
Wed 28<sup>th</sup> **Year 3** Come Dine with Me!



Fri 6<sup>th</sup> **Mufti Day** - World Cancer Day  
Thurs 12<sup>th</sup> Parents Evening - 1.30pm-7pm

**Mon 16<sup>th</sup> - Fri 20<sup>th</sup> February HALF TERM**

Thurs 26<sup>th</sup> **Book Fair**  
Fri 27<sup>th</sup> **FOD** Joey Bar Event

Autumn

Term Dates

Spring

Summer

1st Sept - 24th Oct 25  
**Half-term:**  
27th Oct - 31st Oct  
3rd Nov to 19th Dec 25  
**Inset days:** 1st & 2nd Sept 25

5th Jan - 27th March 26  
**Half Term: 16th- 20th Feb**  
Easter holidays:  
30th March - 10th Apr 26  
**Inset days:** 5th Jan 26

13th Apr - 22<sup>nd</sup> May 26  
**Half Term: 25th- 29th May**  
1st June - 20<sup>th</sup> July 26  
**Inset days:** 20th July 26  
**Bank Holiday:**  
4th May 26

# BEYOND THE SCHOOL GATES



## How might challenges help us grow?

An adventurer named Darren Edwards, who is paralysed from the chest down, is preparing to travel 137 miles across Antarctica using a sit-ski. If he succeeds, he will break the world record for the longest sit-ski journey to the South Pole. Darren hopes his challenge will raise money for charity and show that his injury does not limit what he can achieve.

### Things to talk about at home...

How do you think Darren will feel at each stage of his challenge (before, during, and after)? What kinds of challenges do you think can help you grow the most – something physical, emotional, or trying something new? Can you recall a challenge you have set yourself and achieved? Ask others at home about their experiences.

[CLICK HERE](#)



## Positive

### NEWS

#### Crop yields soar thanks to solar panels – study



Solar farms and agriculture are often billed as rivals when it comes to land use. A new study supports a growing consensus that the opposite is true.

Canadian researchers found that partial shading provided by agrivoltaic systems – solar arrays with crops growing under them – can boost food production, while improving soil health and encouraging nutrient cycling. The benefits increase when the panels are not in use, the study found, meaning decommissioned solar farms could still provide an economic boost to farmers.

Using yield modelling, the study estimated that agrivoltaic shading could boost farm income from potato production by \$3.9bn (£2.95bn) in Germany alone. Other studies have reached similar conclusions. "This agrivoltaic crop yield bump has been shown for dozens of other crops and solar panel combinations all over the world, including basil, broccoli, celery, corn, grapes, kale, lettuce, pasture grass, peppers, potatoes, tomatoes and more," lead researcher Prof Joshua Pearce from Western University, Canada, wrote for The Conversation.

The panels, he added, help mitigate climate extremes, such as heatwaves, "delivering meaningful value for farmers".

[Click here for the clip](#)



BETTER  
TOGETHER

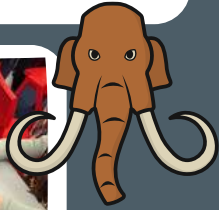


# Stone Age Day

On Thursday, Year 3 travelled back in time for a full day of Stone Age fun and discovery. The children immersed themselves in what life might have been like thousands of years ago, stepping into the shoes of early humans and exploring the skills, creativity and problem-solving needed to survive in the Stone Age.

Throughout the day, they took part in a range of hands-on activities—from crafting pottery inspired by prehistoric life to tackling a surprisingly tricky block puzzle that tested their teamwork and resilience. Laughter, excitement and a healthy bit of challenge filled every moment.

To top it all off, the classroom was transformed by an incredible array of costumes. From fierce hunters to inventive gatherers, the children brought the Stone Age to life with some of the most creative and eye-catching outfits we've ever seen.



# WINTER FUN... AT DVFS



# PARENT PAGE

## DON'T FORGET

To enter front gates at Biggin Way, press Bell icon.

If you need to reach the Extended Schools Team directly, please use our new contact number:  
**07857 500544.**

The **Marston Way School Gates close at 9am** the School Office are unable to open after this time.



Please follow the link to view next years lunch menu

[Downsview 2026 - Lunch Menu](#)

## Help Us GO VIRAL

Dont forget to follow us on Insta, Facebook & subscribe to our Youtube page.

 YouTube <sup>GB</sup>



Instagram: [Downsviewprimary\\_croydon](#)

Facebook: [Downsview Primary and Nursery School](#)

Youtube: [@meghanpughandjoeytheschool9677](#)

## REMINDER

### Voting Closes at 10am on Wednesday 10<sup>th</sup> December

We are pleased to inform you that **three candidates** have come forward to stand for the role of **Parent Governor** at Downsview Primary and Nursery School.

Please **follow the link below** to view the candidates' statements outlining their reasons for standing as Parent Governor and to cast your vote:

[Parent Governor Elections - 2025](#)

**Important** voting information:

- Each Parent/Carer is entitled to **one vote only**, regardless of the number of children they have at the school.
- Any attempt to submit multiple votes will result in all associated votes being disqualified.
- The **closing date** for the ballot is Wednesday 10<sup>th</sup> December at 10.00am.

We encourage all parents and carers to take part in this important election and thank you for supporting the Governance of our School.



# School



# Admissions 2025



## What makes Downsview Special?



### Nurturing & Inclusive Heart -

Inclusive, nurturing support where every individual feels valued & empowered to thrive.



### Forward Thinking Curriculum -

Endless opportunities in a curriculum & environment that sparks creativity, growth & wonder.



### Proven Academic Success -

Our success is driven by care, curiosity & high expectations for all learners. We empower children with the knowledge & resilience needed to achieve their full potential.

**Are you ready to secure a place where your child can flourish?**



Visit our website:

Instagram:

Facebook:

Youtube:

[www.downsviewprimary.co.uk](http://www.downsviewprimary.co.uk)

[downsviewprimarycroydon](https://www.facebook.com/downsviewprimarycroydon)

[Downsview Primary and Nursery School](https://www.facebook.com/DownsviewPrimaryandNurserySchool)

[@meghanpughandjoeytheschool19677](https://www.facebook.com/meghanpughandjoeytheschool19677)

# Dreaming of

# a greener

# CHRISTMAS



## I'M DREAMING OF A GREENER CHRISTMAS

### 4 WAYS TO DISPOSE OF A CUT TREE RESPONSIBLY:

- ▲ Use a council or charity collection
- ▲ Contact local wildlife rescue or city farms to see if they want it for the animals.
- ▲ Start a dead hedge at the bottom of your garden if you have room (though native wood is better).
- ▲ If you know someone with a wood chipper, create mulch for your garden and save it from being transported.

### ALL THAT TWINKLES, 3 WAYS TO LOOK AFTER YOUR FAIRY LIGHTS:

- Remove batteries before storing.
- Pack them carefully.
- Lighting the outside of your house: turn off or put them on a timer before you go to bed, saving energy, money and being kind to wildlife.

*Lights & trees*



### ONE CHANGE TO MAKE:

Keep a live potted tree in your garden all year round and bring it inside each year for the festive season.



**Ignite your child's passion for the stage and screen at PSSA Crystal Palace!**

**PSSA (Pop School & Stage Academy)**- provides professional performing arts training for stage and screen across London. We offer fun and dynamic weekly classes in dance, singing, and acting for ages 4-16, packed with incredible performance opportunities throughout the year.

Led by **passionate** Principal Amelia, we create a fun, nurturing space where every child can thrive - whether they dream of the spotlight or simply want a confidence boost.

Our talented alumni shine on TV, film, and stage, with many progressing to top-performing arts colleges and careers in the creative industries.

At PSSA, we do more than teach - we uplift, encourage, and inspire.

Ready to see your child shine? **Book your trial and join the magic today!**

The Norwood School

Wednesdays 5pm - 6pm 4-6yrs

5pm - 8pm 6-14yrs

Book now:

<https://pssa.classforkids.io/>

Contact Details:

07535 121617

[INFO@PSSA.CO.UK](mailto:INFO@PSSA.CO.UK)

[WWW.PSSA.CO.UK](http://WWW.PSSA.CO.UK)



Downsview Methodist Church will be hosting blood donation sessions on **Tuesday 24 March and Tuesday 7 April 2026, from 9:30 am to 4:00 pm.**

Booking early gives you a better choice of appointment times, so now is a great time to sign up for March and April.



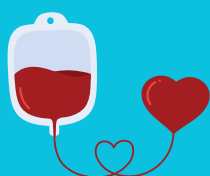
To learn about the donation process and how to give blood for the first time, visit:

[Book a slot](#)

You can also find donation centres near the school here:

[Where to donate](#)

**Thank you for considering this life-saving act!**



# FOD NEWS



## ELFRIDGES SANTA'S SECRET GIFT SHOP

Our Christmas Gift Shop will be open during school hours on **15th and 17th December**.

Children can browse and choose thoughtful presents for the special people in their lives. All gifts are **£2.50** and **£4.50** each and will be wrapped to take home the same day.

**Perfect for parents, grandparents, siblings, friends and more!**

**KS1 reminder:** Please send a list of people your child needs to buy for so our elves can lend a hand.

**CHILDREN MAY BUY AS MANY GIFTS AS THEY WISH!**

## DONATE AND GIVE LOVE

**Help to Support Families in Need**

This Christmas, we're offering an opportunity to help families who may not be able to afford to take part in **ELFRIDGES Santa Secret Gift Shop**. You can purchase gifts for children who will then be able to visit our Elfridges shop and choose presents for their loved ones.

Gift values are **£2.50** and **£4.50**, and you're welcome to donate as many as you wish.

**Thank you for helping us spread a little extra Christmas magic**

### UNIFORM SALE!!

**12TH DECEMBER  
FROM 2.45PM**

Every item £1 or fill a bag for £5

Location: School reception area

Help us to reuse uniforms and save the environment!  
Please donate any clean, undamaged uniform in the red bin outside the office at the recycling point.

### WINTER IS THE TIME FOR HOT CHOCOLATE

**EVERY FRIDAY!**

AT 3.15 PM NEAR  
THE SCHOOL OFFICE

Plain Hot Chocolate.	- £1.50
"The Works" Hot Chocolate (whipped cream, sprinkles and marshmallows)	- £2.50
Tea or Coffee	- £1.00
Snacks	- £0.50
Sweet-bags	- £1.00

**FREE BISCUIT WITH EVERY  
HOT DRINK**

VEGAN & HALAL options are available!

Bring your own  
hot drinks cup to  
get 50p discount!

### CRAFTS AT DOWNSVIEW CHURCH

All children up to 12 years are  
welcome to attend our free  
session with a responsible adult.

**9TH DECEMBER  
3:30-5:00PM**

**THEME: CHRISTMAS**

For any events, Pay at:  
[www.pta-events.co.uk/dvps/](http://www.pta-events.co.uk/dvps/)



# Santa Run Tuesday 16<sup>th</sup> Dec

A fun run! No racing, just festive times with your friends. (Keep an eye out for the cheeky Xmas tree!) A chance to move, laugh and celebrate!



You can dress up that day in Christmassy clothes. Maybe a Xmas Jumper or festive accessories? Gallop like a reindeer, skip like a cheeky elf!



**This event will happen in the school day. Parents do not need to attend. Check out Dojo for updates and pics!**



On the school field during the school day!

Nursery and Reception: 9.20-9.40 (1 lap)

Year 1 & Year 2: 9.40 - 10.00 (1 lap)

Year 3 & Year 4: 10 - 10.20 (2 laps)

Year 5 & Year 6: 10.20 - 10.40 (2 laps)

This is a sponsored fun activity to raise money for our wonderful school.

**There is no minimum sponsorship amount!**

**The money can be paid by cash or online.**

Please request a form from your teacher if your child would like to participate.



<https://superkind.org/campaign/friends-of-downsview-santa-run>

Let's grow together: Support the amazing businesses run by our school families.



**LITTLE CITY Croydon**

**CHRISTMAS SPECIALS**

- Sat 6th - Sanderstead United Reformed Church 10:30am-12pm
- Fri 12th - St Andrews Church, Coulsdon 10am-11:15am
- Weds 17th - St Augustine's church, South Croydon 9:30am-10:45am
- Tues 23rd - St Mildred's Church, Addiscombe 10am-11:15am  
11:30am-12:45pm SEND only

Exclusive discount code: DOWNSVIEW  
Mobile role play adventure for children 6 and under  
[www.bookwhen.com/littlecitycroydon](http://www.bookwhen.com/littlecitycroydon)



ACCESS WELLNESS

**New Year. New Energy. New You.**

Ready to move better, feel stronger, and build lasting habits?

Access Wellness offers personal training and group sessions that fit your life, and your schedule.

**2026 Special Offer. 2-Months. 50% Off!**

[See our service plans here](#)

# BREAKFAST WITH SANTA AND GRINCH



## COMMENTS FROM PARENTS

*"The kids had a great time, thanks for organising"*

*"Our son loved it- thank you"*

*"Thanks to all of you who organised the Santa experience"*



## Reminders

### DECEMBER

- **12th** - Uniform SALE - Last in this Year
- **15th and 17th** - Elfridges : secret gift shop
- **16th** - Santa Fun Run (sponsored run)- the sponsorship form can be collected from your teacher from 25th Nov

### JANUARY

- **16<sup>th</sup>** - Mufti Day- Rainbow Hamper

Every Friday, we have a hot chocolate sale and a Minimal Eco Refill shop 3:15